



Application Services (866) 284-5509

Technical Bulletin: AS 032405 JM

OK Dispense Cycle with No Material Dispensed on 1R Systems

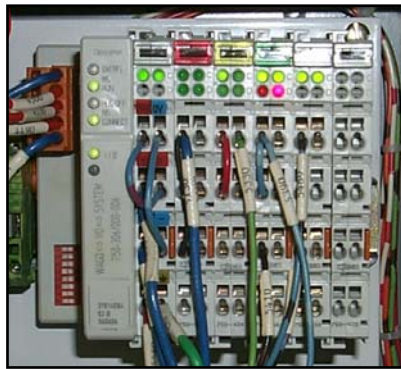
THIS PROBLEM ONLY AFFECTS 1R (REGULATED) DISPENSE SYSTEMS

Problem:

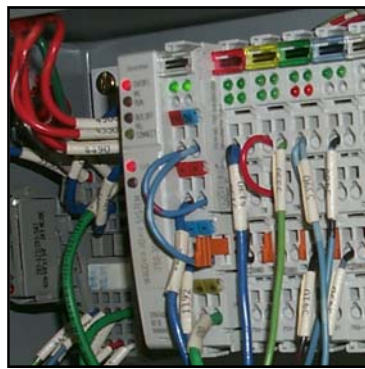
The dispenser did not dispense any material onto the part, but no Faults are sent and a Process OK is sent.

Cause:

The Bus Coupler in the Dispense Junction Box (out at the Dispense Head) could have been pulled off the DIN rail. When this is done, the Bus Coupler is still on DeviceNet, so no Network Faults are sent, but it can no longer read from the volume encoder and return a new value, so the old value is maintained.



Bus Coupler Installed Correctly



Bus Coupler Disconnected from DIN Rail

To Fix:

Mechanical Fix To keep the Bus Coupler from disconnecting from the DIN rail, ensure that the orange latch is rotated onto the edge of the DIN rail securely.



Latch Not Secure



Latch Secure

Software Fix Ingersoll-Rand has updated versions of all AutoStream PC 1R software that will display a Low Volume Fault if the part is run with no material due to a disconnection of the Bus Coupler.

Please contact Application Services at (866) 284-5509 for the software upgrade.